



VENICE COURSE on Extreme Vascular Interventions and Ischemic Foot Management

COURSE PRESENTATION

The critical ischemic foot is a frequent and severe clinical condition in which both *revascularization* and *foot care* must be considered essential components of the therapeutic approach for the limb salvage.

During the next 3rd edition, the EviVenice Course will focus on the ischemic foot with two parallel but separate programs on each of these two clinical issues.

To stimulate the discussion among specialists with different approaches or opinions, during the two days course there will be four plenary sessions on topics of common interest, focused on controversy debated by two opponents.

In the line of the previous editions of the Course, a consistent number of live extreme intervention cases will be presented from two leading centers, in Brescia and Leipzig respectively, while real clinical cases will be presented and discussed in the foot care program.

Characteristic of the Course is to conjugate the multidisciplinary vision with more innovative approaches, and its purpose is to bring to the participants the most recent and effective strategies to successfully manage such a complex and demanding pathology.

Particular emphasis will be reserved to the discussion opportunities, multimedia didactic resources and advanced educational pathways.

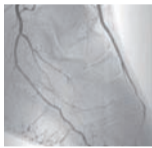
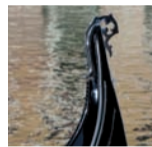
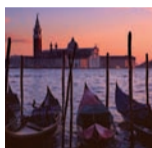
The participation of interventionists and foot specialists from the same centers is encouraged to let the Course enhance and improve their synergy for limb salvage.

The Course Directors



VENICE COURSE on Extreme Vascular Interventions and Ischemic Foot Management

EviVenice 2010



ADVANCED PROGRAM

Directors
Lanfroi Graziani, M.D.
Alberto Piaggese, M.D.



www.evivenice2010.com

April 22-23, 2010 Palazzo del Casinò, Venice - Italy

COURSE VENUE

Palazzo del Casinò
Lungomare Marconi, 30- Lido di Venezia, Venice (Italy)

OFFICIAL LANGUAGE

English is the official language of the Course.
Simultaneous translation from English to Italian will be provided.

DELEGATE REGISTRATION FEE:

Registration Fee
€ 1.500,00

Registration fees are quoted in Euro and include VAT 20%.
Registration will only be processed if payment is made in full.
Registrations for single days are not available.

Delegate's registration fee includes:

- Admission to scientific sessions and scientific exhibition;
- Delegate's kit and Certificate of Attendance;
- Open Coffee, Quick Lunch and Cocktail Dinner.

REGISTRATION

Registration forms, available on the Course Website, can be mailed / faxed to the Organizing Secretariat or completed on-line.

CME ACCREDITATION

Italian CME accreditation will be requested to the Italian Ministry of Health for physicians. The number of CME credits will be communicated as soon as provided by the Ministry.

Certificates with the number of granted credits will be sent by e-mail after the Course.

HOTEL ACCOMMODATION

Blocks of rooms have been set aside: special Course rates are available in the selected hotels, which are located in Venice Lido. Hotel Accommodation can be reserved by downloading the Accommodation Form from the Course Website and mailing / faxing it to the Organizing Secretariat or completed on-line.

COURSE WEB SITE

www.evivenice2010.com

Organizing Secretariat:

adb
eventi & congressi

ADB Eventi&Congressi
Via Tagliapietre, 12b
40123 Bologna
Ph. +39 051 4072960
Fax +39 051 4072964

www.adbcongressi.it
info@adbcongressi.it

www.evivenice2010.com

FACULTY

EXTREME INTERVENTIONS FACULTY

DIRECTOR

Lanfroi Graziani, Brescia - Italy
Head of Invasive Cardiology Unit
Istituto Clinico Città di Brescia, Brescia (Italy)

LIVE TRANSMITTING CENTERS

Istituto Clinico Città di Brescia, *Brescia* - Italy
Lanfroi Graziani, Luis Gerardo Morelli and team

Park Hospital and Heart Center Leipzig, *Leipzig* - Germany
Dierk Scheinert, Andrej Schmidt and team

FACULTY

Gary Ansel, *Columbus* - USA
Irene Bargellini, *Pisa* - Italy
Robert Bersin, *Seattle* - USA
Amman Bolia, *Leicester* - United Kingdom
Jacque Clerissi, *Pavia* - Italy
Roberto De Giglio, *Legnano* - Italy
Ezio Faglia, *Milan* - Italy
Roberto Ferraresi, *Milan* - Italy
Arian Frasheri, *Trapani* - Italy
Robert Gallino, *Washington* - USA
Erich Minar, *Wien* - Austria
Lars Norgren, *Orebro* - Sweden
Alberto Piaggese, *Pisa* - Italy
Pasquale Petruzzi, *Pisa* - Italy
Federico Quaini, *Parma* - Italy
Gunnar Tepe, *Tuebingen* - Germany
Thomas Zeller, *Bad Krozingen* - Germany

ISCHEMIC FOOT FACULTY

DIRECTOR

Alberto Piaggese, Pisa - Italy
Head of Diabetic Foot Section
Department of Endocrinology and Metabolism
University Hospital of Pisa, Pisa (Italy)

FACULTY

Jan Apelqvist, *Malmo* - Sweden
Javer Aragon Sanchez, *Las Palmas* - Spain
David Armstrong, *Tucson* - USA
Irene Bargellini, *Pisa* - Italy
Antony Berendt, *Oxford* - United Kingdom
Carlo Caravaggi, *Abbiategrosso* - Italy
Antonio Ceriello, *Barcelona* - Spain
Giacomo Clerici, *Milan* - Italy
Jacques Clerissi, *Pavia* - Italy
Raffaele De Caterina, *Chieti* - Italy
Marco De Carlo, *Pisa* - Italy
Janine Dorffler-Melly, *Berne* - Switzerland
Michael Edmonds, *London* - United Kingdom
Ezio Faglia, *Milan* - Italy
Giovanni Ghirlanda, *Rome* - Italy
Beate Kuppert, *Pisa* - Italy
Francesco Liistro, *Arezzo* - Italy
Roberto Miccoli, *Pisa* - Italy
Erich Minar, *Wien* - Austria
Lucia Ricci, *Arezzo* - Italy
Nicolaas Schaper, *Maastricht* - Netherlands
Luigi Uccioli, *Rome* - Italy
Sjef van Baal, *Almelo* - Netherlands
Gunter Wolf, *Jena* - Germany

ADVANCED PROGRAM

APRIL 22, 2010

EXTREME INTERVENTIONS PROGRAM Sala Perla

08.00 - 09.00	Registration
09.00 - 09.15	Welcome and Introduction <i>L. Graziani</i>
09.15 - 12.00	Live Cases from ICCB-Brescia and Lectures Operators: <i>L. Graziani, L.G. Alvarez Morelli</i> Panelists: <i>G. Ansel, A. Bolia, A. Frasher</i>
09.15	Live Cases from ICCB-Brescia
09.45	The important role of teaching modalities for extreme interventions <i>G. Ansel</i>
10.00	Live Cases from ICCB-Brescia
10.30	How to Proceed spot case <i>G. Ansel</i>
10.40	Subintimal or intraluminal for BTK: true alternative or synergy? <i>A. Bolia</i>
10.55	Live Cases from ICCB-Brescia
11.35	Discussion

ISCHEMIC FOOT PROGRAM Salone delle Feste

08.00 - 09.00	Registration
09.00 - 09.15	Welcome and Introduction <i>A. Piaggese</i>
09.15 - 09.45	Opening Lecture L'epidemiologia del piede diabetico ischemico <i>Epidemiology of the diabetic ischemic foot</i> <i>E. Faglia</i>
09.45 - 11.00	Pathogenesis Chairman: <i>M. Edmonds</i>
09.45	Insulin-resistance, inflammation and PAD <i>A. Ceriello</i>
10.05	Peculiarity of the diabetic macroangiopathy <i>M. Edmonds</i>
10.25	New markers for an old disease <i>R. Miccoli</i>
10.45	Discussion
11.00 - 12.00	For Debate Is preliminary diagnostic assessment always necessary before intervention? Chairman: <i>E. Minar</i> YES: <i>I. Bargellini</i> NO: <i>J. Clerissi</i>

12.00 - 13.00 Sala Perla SYMPOSIUM

13.15 - 17.30	Live Cases from ICCB-Brescia and Lectures Operators: <i>L. Graziani, L.G. Alvarez Morelli</i> Panelists: <i>R. Bersin, E. Minar, P. Petruzzi</i>
13.15	Live Cases from ICCB-Brescia
13.45	Intervention strategy in CLI: our approach in a high volume centre <i>T. Zeller</i>
14.00	Live Cases from ICCB-Brescia
14.30	Femoropopliteal stenting in CLI: which strategy? <i>E. Minar</i>
14.45	How To Proceed spot case <i>G. Ansel</i>
14.55	Live Cases from ICCB-Brescia
15.30	Crossover vs antegrade approach for extreme interventions? <i>R. Bersin</i>
15.45	Screening with dobutamine stress echocardiography in high risk patients with CLI <i>A. Frasher</i>
16.00	Live Cases from ICCB-Brescia
16.30	How To Proceed spot case <i>G. Ansel</i>
16.40	Outpatient intervention in CLI: our approach <i>E. Minar</i>
16.55	Live Cases from ICCB-Brescia
17.20	Discussion

13.00 - 14.00	Lunch - Exhibition viewing
14.00 - 14.30	Lecture: The ischemic diabetic foot in Europe, insights from the Eurodiale Study <i>N. Schaper</i>
14.30 - 15.30	Co-morbidity Chairmen: <i>L. Ricci, G. Wolf</i>
14.30	The heart-foot syndrome <i>F. Liistro</i>
14.50	The head-foot syndrome <i>M. De Carlo</i>
15.10	The kidney-foot syndrome <i>G. Wolf</i>
15.30 - 16.30	Medical therapy for the ulcerated ischemic foot Chairman: <i>J. Apelqvist</i>
15.30	Antibiotic Therapy in the management of foot osteomyelitis <i>T. Berendt</i>
15.50	The role of metabolic control <i>G. Ghirlanda</i>
16.10	New indications for old drugs: the adjuvant therapies revisited <i>L. Uccioli</i>
16.30 - 17.30	For Debate Antiplatelets vs anticoagulants in the management of the diabetic patients with PAD Chairman: <i>E. Faglia</i> Antiplatelets: <i>J. Dorffler-Melly</i> Anticoagulants: <i>R. De Caterina</i>

17.30 - 18.30 Sala Perla SYMPOSIUM

APRIL 23, 2010

08.30 - 12.00	Live Cases from Leipzig and Lectures Operators: <i>D. Scheinert, A. Schmidt</i> Panelists: <i>R. Ferraresi, G. Tepe, T. Zeller</i>
08.30	Live Cases from Leipzig
09.00	How to measure the quality of the revascularization in the ischemic foot <i>A. Piaggese</i>
09.15	Intervention strategies in case of Btk restenosis <i>G. Tepe</i>
09.30	Live Cases from Leipzig
10.00	Is the peroneal artery recanalization enough? The rationale of my strategy <i>R. Ferraresi</i>
10.15	Live Cases from Leipzig
10.45	Limb salvage in critical limb ischemia: The role of laser therapy <i>R. Gallino</i>
11.00	Live Cases from Leipzig
11.30	Discussion

09.00 - 09.30	Lecture A surgery dedicated to the diabetic foot <i>D. Armstrong</i>
09.30 - 10.45	Surgical therapy Chairmen: <i>A. Piaggese, S. van Baal</i>
09.30	The perioperative management of diabetic foot patients <i>B. Kupperts</i>
09.50	Surgical drainage of the infected foot <i>J. Aragon Sanchez</i>
10.10	Surgical reconstructive techniques <i>A. Piaggese</i>
10.30	Discussion
10.45 - 11.30	Clinical Cases
11.30 - 12.00	Lecture Innovative approach to the treatment of severe diabetic foot infection: a new surgical protocol <i>C. Caravaggi</i>

12.00 - 13.00 Sala Perla SYMPOSIUM The future of V.A.C.® Therapy

with the support of 

13.15 - 17.00	Live Cases from Leipzig and Lectures Operators: <i>D. Scheinert, A. Schmidt</i> Panelists: <i>G. Ansel, L. Graziani, E. Minar</i>
13.15	Live Cases from Leipzig
13.45	How To Proceed spot case <i>G. Ansel</i>
13.55	Is diabetes a stem cells disease? <i>F. Quaini</i>
15.10	Live Cases from Leipzig
15.40	Are long lasting procedures unavoidable in multilevel CLI? Practical solutions to save time and renal function <i>L. Graziani</i>
15.55	How To Proceed spot case <i>G. Ansel</i>
16.05	Live Cases from Leipzig
16.35	Discussion

13.00 - 14.30	Lunch - Exhibition Viewing
14.30 - 15.00	Lecture The stratification of the risk in the multi-complicated patient <i>J. Apelqvist</i>
15.00 - 16.00	New technologies for the management of the diabetic ischemic leg Chairman: <i>A. Piaggese</i>
16.00 - 17.00	For Debate Does revascularization always precede surgery? Chairman: <i>D. Armstrong</i> YES: <i>S. van Baal</i> NO: <i>G. Clerici</i>

17.00 - 18.00 Sala Perla FOR DEBATE (Towards the Future)

Is there any need for a New Consensus on the indications and outcome measurements of revascularization in CLI?

Chairman: *E. Faglia*

Introduction:
A. Piaggese

YES - Proofs of clinical inadequacy
E. Faglia

NO - Tasc II still remains valid
L. Norgren

Discussants:
Intervention through the last twenty years
A. Bolia

We have improved endovascular strategies in the ischemic foot
L. Graziani

The advantage of an integrated approach
A. Piaggese

Suggestions to reliably measure the benefit of new techniques and devices
E. Minar

Discussion

Remarks and conclusion: *E. Faglia, A. Piaggese*

with the support of 